

The Islamic University
College of Medical Technologies
Department of Radiation Techniques



Practical General Anatomy

LAB -1

INTRODUCTION TO ANATOMY AND HUMAN BODY

MSC:Tariq mohammed AL-Shybany

MSC:Mohammed.K.S.Alquraishi

Themes of the lecture:-

- 1- Introduction to human anatomy.
- 2- The Language of Anatomy.
- 3- Body Cavities.
- 4- Details of the anatomical parts.

The purpose of the lecture:-

(Introducing the student to the concept of Introduction to human anatomy)

Behavior Objectives:-

- 1- To know the definition of the anatomy and its branches.
- 2- In order for the student to learn the language of anatomy and divide it.
- 3- The student should be able to know the body cavities.
- 4- The student be able to differentiate between anatomical parts and cavities.
- 5- The student enumerates the anatomical taxonomy points.

References of the lecture:-

https://books.google.iq/books?id=aK52DwAAQBAJ&printsec=frontcover&dq=general+anatomy+book+pdf&hl=ar&sa=X&redir_esc=y#v=onepage&q&f=false

https://books.google.iq/books?id=6bZEDwAAQBAJ&printsec=frontcover&dq=general+anatomy+book+pdf&hl=ar&sa=X&redir_esc=y#v=onepage&q&f=false

Define Anatomy : Term applied to study human body by the method of dissection.

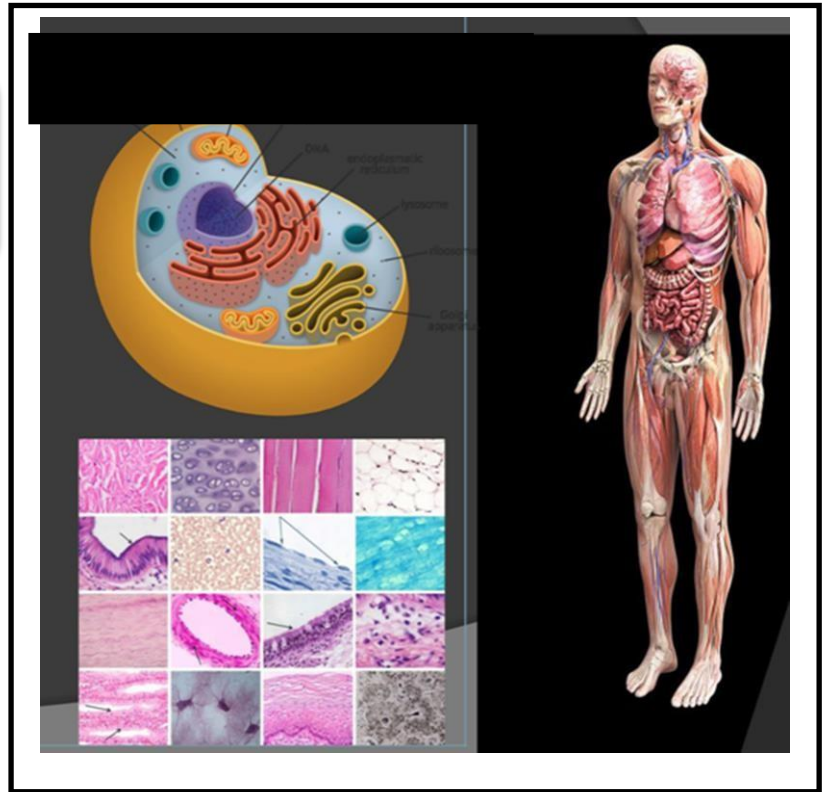
Anatomy Division

Anatomy Division

1- Microscopic anatomy::

a- Cytology:

b-Histology:



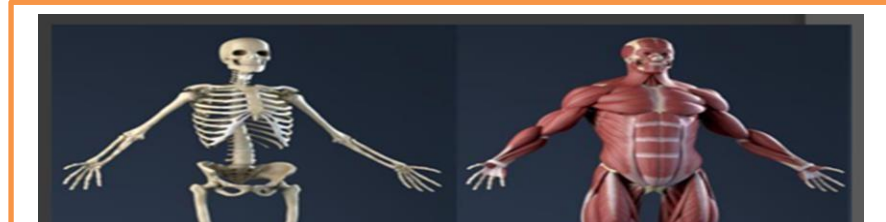
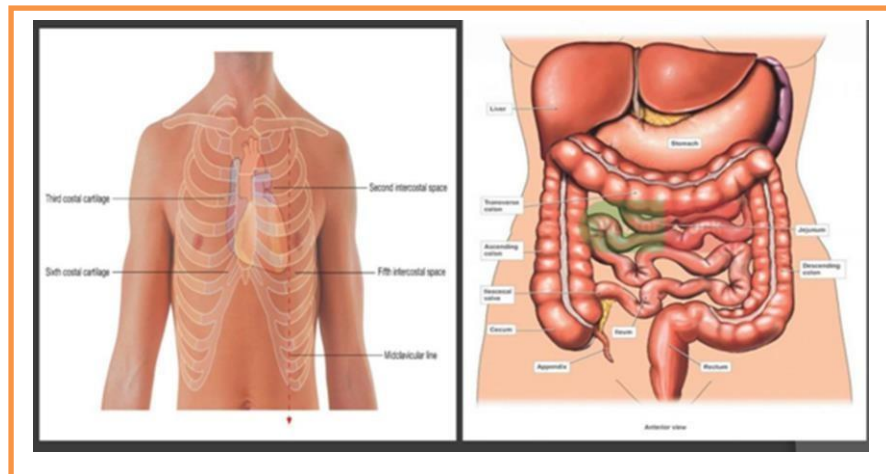
2- Macroscopic or Gross anatomy:

a- Surface anatomy:

b- Regional anatomy:

c- Systemic anatomy

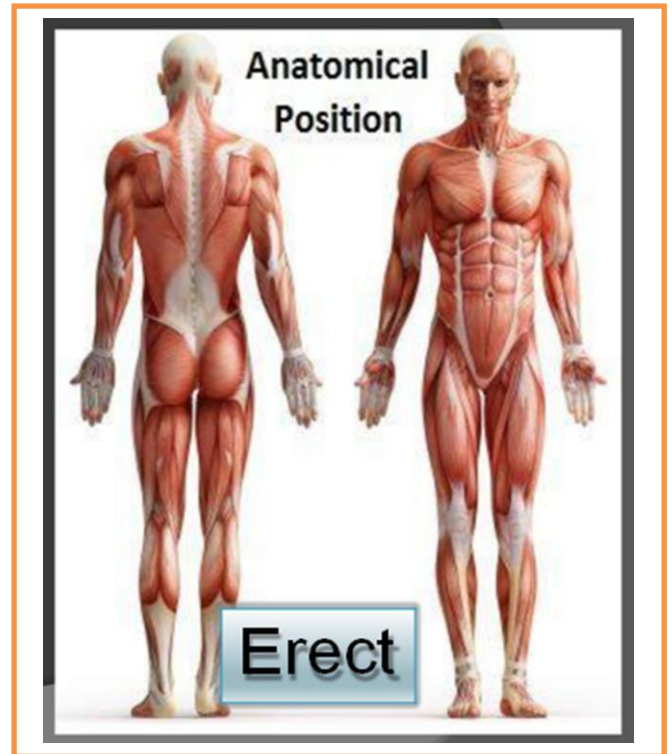
d- developmental anatomy



Anatomical positions Anatomical positions

1- Erect

- is standing erect.
- the face is forward
- upper limbs are at the sides.
- the palms forward.



2- Supine.

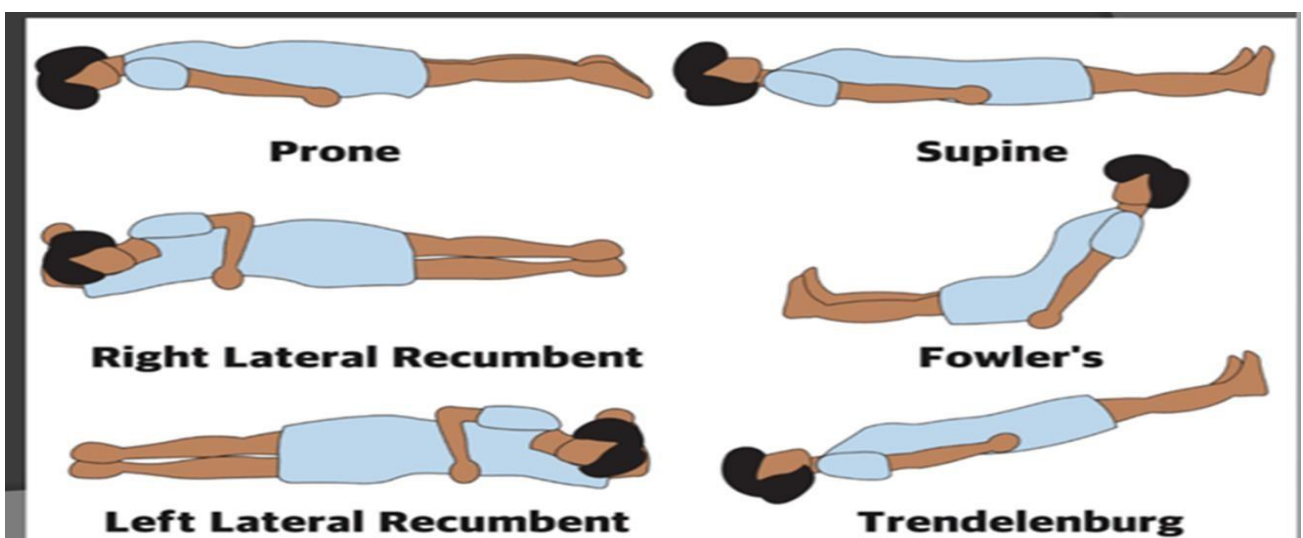
3- Prone.

4- Right lateral recumbent .

5- left lateral recumbent .

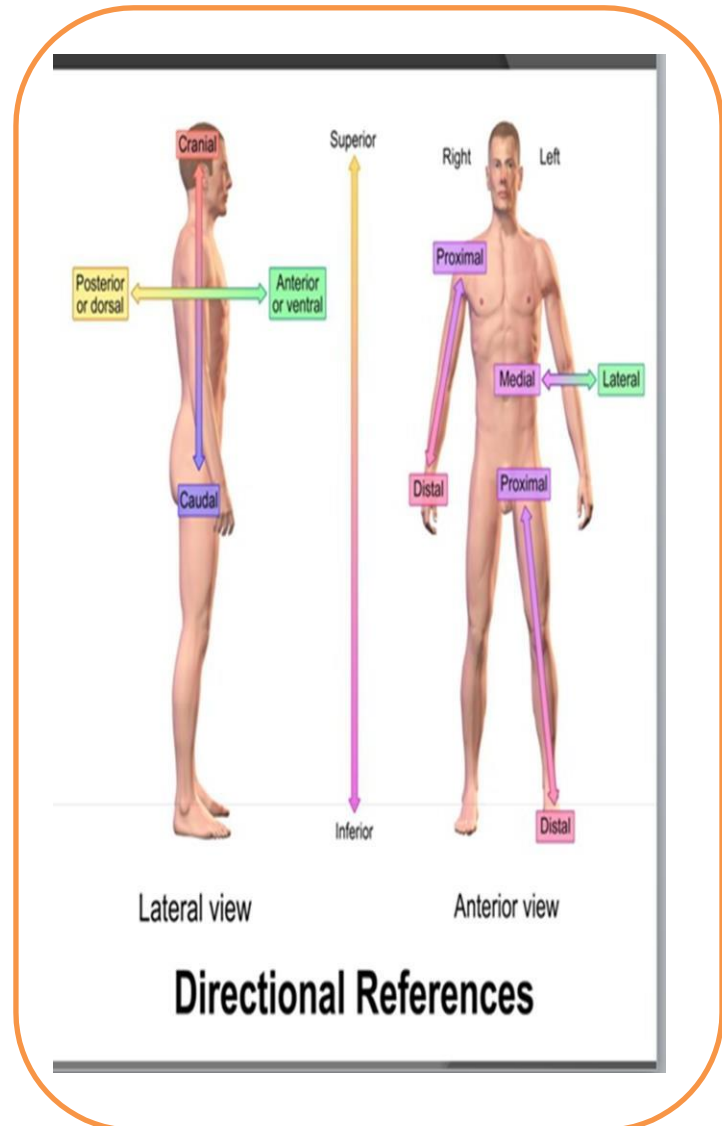
6- Fowler's .

7- Trendelenburg .



DIRECTIONAL TERMS

- Superior/Cranial**
- Inferior/Caudal**
- Anterior/Ventral**
- Posterior/Dorsal**
- Deep: away from surface**
- Superficial: toward surface**
- Medial: toward midline**
- Lateral: away from midline**
- Proximal: near origin**
- Distal: away from origin**



The body planes

Planes : are imaginary flat surfaces that are used to divide the body or organs into definite areas . Include 3 types:

1- Sagittal plane:

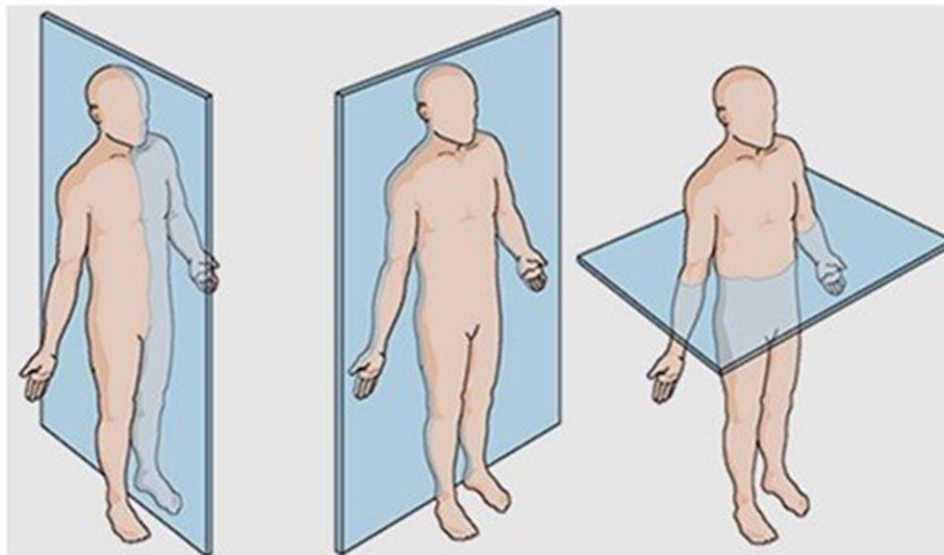
divides the body or an organ vertically into left and right sections.

2-Frontal plane (Coronal):

divides the body into anterior and posterior sections.

3- Horizontal plane (Transverse):

divides the body into superior and inferior sections.



Sagittal Plane

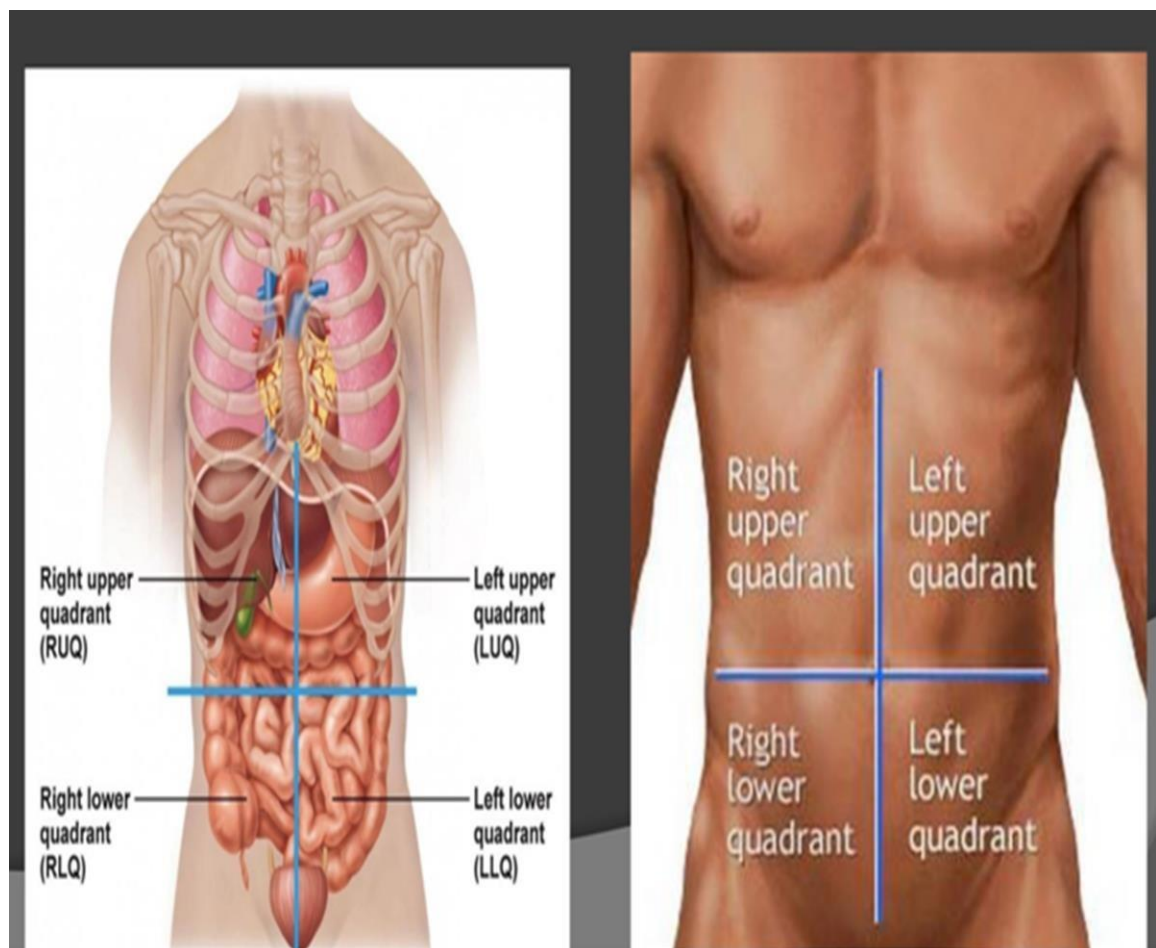
Frontal Plane

Horizontal Plane

Abdominal surface anatomy

Abdominal surface anatomy can be described when viewed from in front of the abdomen in 2 ways:

1- divided into 4 quadrants by single vertical and horizontal imaginary planes



divided into 9 regions by two vertical and two horizontal imaginary plane

